

**ANIMALS ASIA FOUNDATION – ENRICHMENT PROGRAM  
CBRC PHOTO LIBRARY**

**NON-FOOD ENRICHMENT ITEMS & ENCLOSURE FIXTURES**

亚洲动物基金会 — 趣味物品项目

中国黑熊救护中心图片库

非食物类趣味物品&草场固定设施



**Created:** February 2010 by Sharon Holden

**Version:** 4

**Updated:** October 2012 by Mei Lun Mui

## Table of contents: 目录:

Page # 页码

Behavioural enrichment items 行为趣味物品		Page # 页码
• <b>Novel objects (Non-natural) 新奇物品 (非天然)</b>		
○ Balls 球		5 - 8
○ Kongs 橡胶球		9
○ Feeder tubes 趣味细竹筒		10, 11
○ Tyres 轮胎		12 - 15
○ Drums 蓝色桶		16, 17
○ Fire hose toys 消防带玩具		18
○ Floating pillows 浮枕		19
○ Noise toy 噪音玩具		19
○ PVC ladder PPR 梯形玩具		19
○ Traffic cones 交通三角锥		20
○ Bungee 蹦极带		20
○ Nylon net 趣味网兜		21
○ Metal pool (moveable) 金属盆 (可移动)		22
• <b>Novel objects (Natural) 新奇物品 (天然)</b>		
○ Bamboo feeders 趣味粗竹筒		23
○ Bamboo toys 竹筒玩具		23
○ Swings 秋千		24
○ Log treats and hanging log toys 趣味圆木&悬挂圆木玩具		25
○ Large logs (hanging and moveable) 大型圆木 (悬挂&可移动)		26
○ Rope toys 绳球玩具		27
○ Hessian sacks 麻袋		27
○ Natural brooms 天然扫把		27

## Table of contents: 目录:

Page # 页码

**Environmental enrichment items (Enclosure fixtures & furniture) 环境趣味物品 (草场固定设施&设备)**

•	A-Frame climbing structure	攀爬架	28, 29
•	Play structure	三角架	30
•	Teepee	A 字架	31
•	Large concrete tunnel	大型水泥洞	32
•	Small concrete tunnel	小型水泥洞	33
•	Firehose hammock	消防带吊床	34, 47
•	Table	平台/桌子	35
•	Metal basket	金属篮子	36
•	A-frame hanging log	A 字形圆木悬挂架	37
•	Forked or standing tree (with holes)	直立树杈/树桩 (有孔)	38, 39
•	Log wall	树排	40
•	Artificial tree	人工树	41
•	See-saw structure	跷跷板	42
•	Log pile	圆木堆	43
•	Boulders	大石头	44
•	Digging pit	旱坑	45
•	Pool	游泳池	46

**Table of contents: 目录****Page # 页码****Macaque enrichment 猕猴趣味物品**

- **Non-natural item 非天然物品**
  - Balls 球 48, 49
  - Kongs 橡胶球 50
  - Drums 蓝色桶 51
- **Miscellaneous 混杂** 52-69
- **All other toys – refer to bear enrichment photographs 其他玩具— 参照熊用趣味物品图片**

**Toy contacts 玩具联系人**

- Aussie dog 澳斯狗狗用品 59
- Kong 橡胶球 60
- Boomer ball 光滑球 61
- Otto environmental 欧托环保用品 62
- Nylabone products 洁牙骨产品 63

### Novel enrichment: non-natural items – Balls

大号球-无孔



Ball large – no holes

CODE: NNB001

中号球-无孔



Ball medium – no holes CODE: NNB002

小号球-无孔



Ball small – no holes

CODE: NNB003

大号球-有孔



Ball large – with holes

CODE: NNB001.1

小号球-有孔



Ball small – with holes CODE: NNB003.1

### Novel enrichment: non-natural items – Balls

光滑球-无孔



Boomer ball no holes

CODE: NNB004

光滑球-有孔



Boomer ball with holes

CODE: NNB004

带环的食球



Food ball with ring

CODE: NNB005

带环的食球



Food ball with ring

CODE: NNB005

### Novel enrichment: non-natural items – Balls

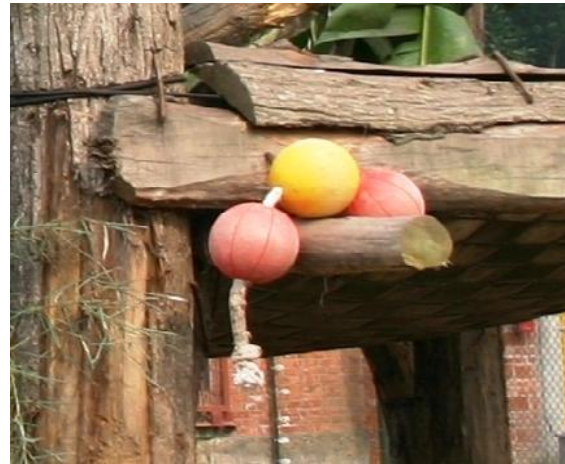
有带子的球



Ball with thong

CODE: NNB006

串联彩色塑料球



Ping's pearls

CODE: NNB007

河马球（大）



Hippo ball (large)

CODE: NNB008

### Novel enrichment: non-natural items – Balls

带管子的球



Fum tube ball

CODE: NNB009

带管子的球



Fum tube ball



### Novel enrichment: non-natural items – Kongs

橡胶球-红



Kong – red

CODE: NNK001

橡胶球-红



Kong - red

橡胶球-黑



Kong – black

CODE: NNK002

橡胶球组合（转运笼专用）



Kong combination (TC's only)

### Novel enrichment: non-natural items - Feeder tubes

黑色喂食筒（垂直）



Black feeder tube (vertical) CODE: NNF001

黑色喂食筒（垂直）



Black feeder tube (vertical)

黑色喂食筒（水平）



Black feeder tube (horizontal) CODE: NNF002

黑色喂食筒（水平）



Black feeder tube (H)

### Novel enrichment: non-natural items - Feeder tubes

蓝色喂食筒（小）



Blue feeder tube (S) CODE: NNF003

黄色喂食筒（大）



Yellow feeder tube (L) CODE: NNF004

PPR 喂食筒（大）



PVC feeder tube (L) CODE: NNF005

PPR 喂食筒（大）



PVC feeder tube (L)

### Novel enrichment: non-natural items – Tyres

轮胎（中）



Tyre (medium)

CODE: NNT001

轮胎（中）



Tyre (medium)

### Novel enrichment: non-natural items – Tyres

轮胎（大）



Tyre (Large)

CODE: NNT002

轮胎（大）



Tyre (Large)

### Novel enrichment: non-natural items – Tyres

卡车轮胎（巨大）



Truck tyre (giant)

CODE: NNT003

卡车轮胎（巨大）



Truck tyre (giant)

## Novel enrichment: non-natural items – Tyres

轮胎组合



Tyre combination

CODE: NNT004

### Novel enrichment: non-natural items – Drums

蓝色桶（大号有孔）



Drum (Large with holes)

CODE: NND001

蓝色桶（大号无孔）



Drum (Large no holes)

CODE: NND001.1



## Novel enrichment: non-natural items – Drums

白色塑料汽油桶（没有使用）



White plastic cannister

CODE: NND002

白色塑料汽油桶（没有使用）



White plastic cannister

CODE: NND002

## Novel enrichment: non-natural items – fire hose toys

消防帶条形玩具



Firehose browse hanger

CODE: NNH001

消防帶方形玩具



Firehose cube

CODE: NNH002

### Novel enrichment: non-natural items – Miscellaneous

噪音玩具



Noise toy

CODE: NNM001

PPR 梯形玩具（转运笼专用）



PVC ladder (TC only) CODE: NNM002

浮枕（有带子&无带子）



Floating pillow (with & without thong) CODE: NNM003

浮枕（有带子）



Floating pillows (with thong)

### Novel enrichment: non-natural items – Miscellaneous

交通三角锥



Traffic cone

CODE: NNM004

蹦极带



Bungee (fum tube ball attached) CODE: NNM005

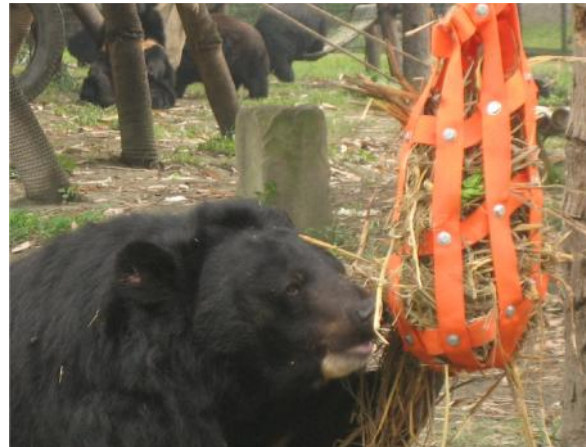
### Novel enrichment: non-natural items – Miscellaneous

趣味网兜



Nylon net

CODE: NNM006



Nylon net

CODE: NNM006

### Novel enrichment: non-natural items – Miscellaneous

金属盆（草场）



Metal pool (enclosure)

CODE: NNM006

金属盆（舍内）



Metal pool (den)

CODE: NNM007

### Novel enrichment: natural items – Bamboo & wood

趣味粗竹筒



Bamboo feeder tube

CODE: NBW001

趣味粗竹筒（悬挂）



Bamboo feeder hanging

竹制旋转玩具（固定）



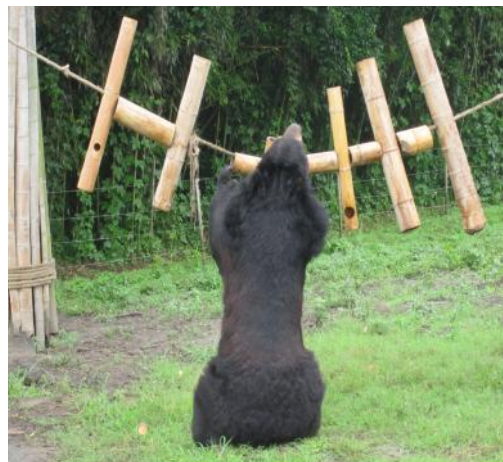
Bamboo spinning toy (fixed) CODE: NBW003

竹制组合玩具（悬挂）



Bamboo toys (hanging) CODE: NBW004

竹制组合玩具（悬挂）



Bamboo toys (hanging)

竹制梯形玩具



Bamboo Ladder CODE: NBW002

### Novel enrichment: natural items – Bamboo & wood

秋千（竹制）



Swing (bamboo)

CODE: NBW005

秋千（木制）



Swing (wood)

CODE: NBW005

吊床（竹制）



Hammock (bamboo)

CODE: NBW006



## Novel enrichment: natural items – Bamboo & wood

趣味圆木



Log Treat

CODE: NBW007

趣味圆木



Log treat

### Novel enrichment: natural items – Bamboo & wood

大号悬挂圆木



Large hanging log CODE: NBW008

大号悬挂圆木



Large hanging log

悬挂圆木玩具



Hanging log toy CODE: NBW009

悬挂圆木玩具



Hanging log toy

### Novel enrichment: natural items – Miscellaneous

麻袋（松）



Hessian Sack (loose)

CODE: NMH001

麻袋（悬挂）



Hessian sack (hanging)

绳球



Rope toy

CODE: NMR001

天然扫把（高粱）



Natural broom (straw)

CODE: NMB001

### Environmental enrichment – enclosure fixtures

攀爬架



A-frame platform

CODE: EEA001

攀爬架（带草的斜坡）



A-frame platform (with grass ramp)

### Environmental enrichment – enclosure fixtures

攀爬架（带水泥支撑柱）



A-frame platform (with concrete support post)

棕熊攀爬架



Brown bear platform

CODE: EEA002

### Environmental enrichment – enclosure fixtures

三脚架（单）



Play structure (single)

CODE: EEP001

三脚架（双）



Play structure (double)

CODE: EEP001.1

三脚架（小）



Play structure (small)

CODE: EEP001.2

### Environmental enrichment – enclosure fixtures

A 字架



Teepee

CODE: EET001

A 字架



Teepee

**Environmental enrichment – enclosure fixtures**

大型水泥洞（带圆木堆）



Concrete tunnel large (w log pile) CODE: EEC001

超大型水泥洞（带石头堆）



Concrete tunnel super large (w boulders) CODE: EEC002

大型水泥洞（带草）



Concrete tunnel large (w grass)



### Environmental enrichment – enclosure fixtures

小型水泥洞，水平



Concrete tunnel small horizontal

CODE: EEC003

水泥洞，垂直



Concrete tunnel vertical

CODE: EEC003.1

## Environmental enrichment – enclosure fixtures

消防帶吊床



Fire hose hammock

CODE: EEH001

消防帶吊床



Fire hose hammock

**Environmental enrichment – enclosure fixtures**

木桌



Table

CODE: EEW001

木桌



Table

平台（带迷宫）



Table (in maze)

CODE: EEW002

迷宫（带平台）



Maze (w table)

CODE: EEW003

### Environmental enrichment – enclosure fixtures

金属篮子



Metal basket

CODE: EEB001

金属篮子



Metal basket

## Environmental enrichment – enclosure fixtures

金属 A 字架，用于悬挂大型圆木



Metal A-Frame for large hanging log

CODE: EEM001

### Environmental enrichment – enclosure fixtures

直立树杈



Standing tree (forked)

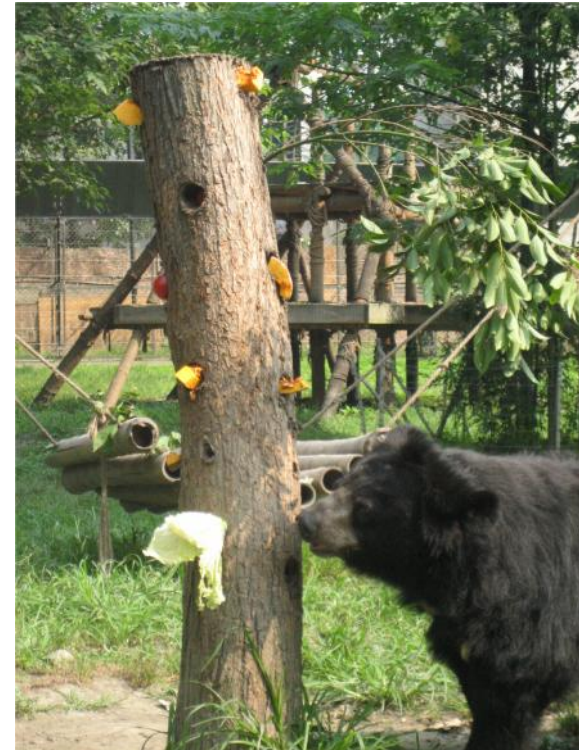
CODE: EES001

直立树桩



Standing tree

直立树桩（有孔）



Standing tree (with holes)

## Environmental enrichment – enclosure fixtures

直立树桩（带趣味品）



Standing tree (with enrichment)

### Environmental enrichment – enclosure fixtures

树排



Tree wall

CODE: EES002

树排



Tree wall



## Environmental enrichment – enclosure fixtures

人工树



Artificial tree

CODE: EES003

人工树



Artificial tree

## Environmental enrichment – enclosure fixtures

跷跷板



See-saw structure

CODE: EES004

### Environmental enrichment – enclosure fixtures

圆木堆（在水泥洞上）



Log pile (on concrete tunnel)

CODE: EEL001

圆木堆



Log pile

圆木堆



Log pile

## Environmental enrichment – enclosure fixtures

大石头

假山



Boulders

CODE: EEB001

### Environmental enrichment – enclosure fixtures

旱坑



Digging pit

CODE: EED001

旱坑



Digging pit



Digging pit

### Environmental enrichment – enclosure fixtures - Pools

游泳池



Pool

CODE: EEP001



## Environmental enrichment – den enrichment

消防帶吊床（舍内）



Fire hose hammock

CODE: EED001

### Macaque enrichment - Balls

彩色喂食球



Colourful feeder ball

CODE: MEB001

彩色喂食球



Colourful feeder ball

CODE: MEB002

喂食方块



Feeder cube

CODE: MEB003

中号球



Medium ball

CODE: MEB004



## Macaque enrichment - Balls

按摩球



Massage ball

CODE: MEB005

帶繩的彩色塑料球



Colourful rope ball

CODE: MEB006

### Macaque enrichment - Kongs

黑色橡胶球（中）



Black kong (M) CODE: NNK002

橄榄球状橡胶球



Footie kong CODE: NNK004

迷你橡胶球



Mini kong CODE: NNK003

### Macaque enrichment - Drums

大桶



Drum

CODE: MED001

大桶，猴子饲料槽



Large drum – monkey crib

CODE: MED002

### Macaque enrichment - Miscellaneous

镜子



Mirror

CODE: MEM001

镜子



Mirror

## Macaque enrichment - Miscellaneous

毛绒玩具



Stuffed toy

CODE: MES001

### Macaque enrichment - Miscellaneous

竹秋千



Bamboo swing

CODE: MEN001

竹篮



Bamboo basket

CODE: MEN002

绳网



Rope net

CODE: MEN003

### Macaque enrichment - Miscellaneous

拖把头觅食玩具



Mop head forager CODE: MEM002

障碍插销喂食器-大号



障碍插销喂食器-小号



Wooden peg bamboo feeder - Large (above left) and Small (above middle and right).

CODE: MEW001 (Large), MEW002 (Small)

旋转漏食喂食器 1



Twisting bamboo feeder 1

CODE: MET001

## Macaque enrichment – Miscellaneous

托盘旋转喂食器 1



Twisting wooden block feeder 1



CODE: MEB001

旋转滑动喂食器 1



Hanging sliding bamboo feeder 1



CODE: MEH001



### Macaque enrichment – Miscellaneous

障碍插销滑动喂食器



Pegs & Slide bamboo feeder 1  
CODE: MEP001

扫把头觅食板



Broom head foraging board  
CODE: MEB002

旋转漏食喂食器 2



Twisting bamboo feeder 2



CODE: MET002

## Macaque enrichment – Miscellaneous



Foraging box with various substates and textures inside.

裝有多种填充物和材料的觅食盒子。

CODE: MEF001

### Macaque enrichment – Miscellaneous

竹筒



Bamboo pots



CODE: MEM003

纸卷



Kitchen rolls



CODE: MEM004

### Macaque enrichment – Miscellaneous

纸包裹



Paper parcel



CODE: MEM005

芭蕉叶包裹



Banana leaf parcels



CODE: MEM006

## Macaque enrichment – Miscellaneous

杂志卷



Rolled up magazines



CODE: MEM007

报纸卷



Newspaper parcels

CODE: MEM008

### Macaque enrichment – Miscellaneous

多层盒子



Layered boxes



CODE: MEM009

塑料容器



Plastic container



CODE: MEM010

### Macaque enrichment – Miscellaneous

水果包



Fruit pack



CODE: MEM011

熏香（放草场外）



Incense stick (outside of enclosure)



CODE: MEM012

## Macaque enrichment – Miscellaneous

熊毛



Bear fur



CODE: MEM013

旋转圆木



Spinning log



CODE: MEM014



### Macaque enrichment – Miscellaneous

旧布



Rags



CODE: MEM015

衣服



Clothes



CODE: MEM016

### Macaque enrichment – Miscellaneous

雨靴



Gum boots



CODE: MEM017

金属碗



Metal bowl



CODE: MEM018

### Macaque enrichment – Miscellaneous

塑料桶



Bucket



CODE: MEM021

悬挂勺子



Hanging spoons CODE: MEM022

悬挂 CD



Hanging CDs

CODE: MEM023

### Macaque enrichment – Miscellaneous

泡泡浴



Bubble bath



CODE: MEM024

冲水管喷水到盆中



Hose pipe sprayed into pool

CODE: MEM025

澡盆漂浮玩具



Bath with floating toys

CODE: MEM026

### Macaque enrichment – Miscellaneous

碎纸屑



Shredded paper



CODE: MEM027

悬挂竹梯



Hanging bamboo ladder



CODE: MEM028

**Aussie dog**

澳斯狗狗用品

Contact: Joe Parsons - [aussiedog@aussiedog.com.au](mailto:aussiedog@aussiedog.com.au)

<http://www.aussiedog.com.au>



**Kong**

橡胶球

**Contact: Gill Maltby (UK office) [g maltby@animalsasia.org](mailto:g maltby@animalsasia.org)**

**<http://www.kongcompany.com/>**



**Boomer ball**

光滑球

**Contact: Gill Maltby (UK office) [g maltby@animalsasia.org](mailto:g maltby@animalsasia.org)**





**Otto Environmental**

欧托环保用品

<http://www.ottoenvironmental.com/>



**Nylabone products**

洁牙骨用品

<http://www.nylabone.com/>

